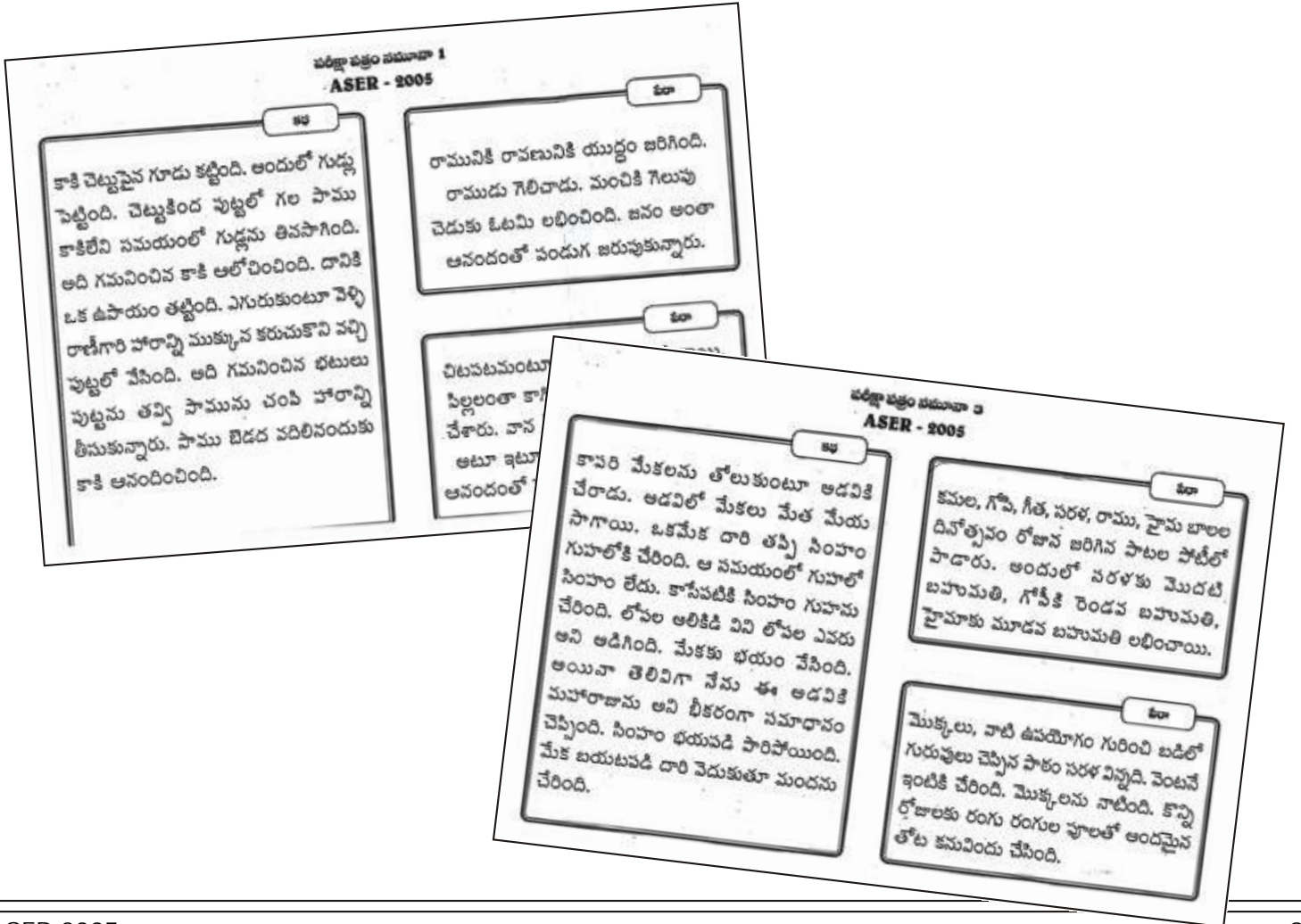


Performance of all districts

District	All Children	Std V children		District	All Children	Std V children	
	% Out-of-school	% CAN read level - 2	% CAN solve division and subtraction		% Out-of-school	% CAN read level - 2	% CAN solve division and subtraction
Adilabad	7.5	63.2	65.2	Nalgonda	6.6	52.1	41.7
Chittoor	6.1	72.8	69.1	Nellore	5.8	71.9	55.1
Cuddapah	11.4	47.2	31.5	Nizamabad	3.6	46.5	40.7
EastGodavari	12.3	59.1	45.7	Prakasam	7.9	77.5	57.3
Guntur	10.6	68.6	60.9	Rangareddi	4.2	49.4	24.4
Karimnagar	3.2	51.7	23.1	Srikakulam	5.3	58.6	49.4
Khammam	0.0			Visakhapatnam	5.3	48.7	38.7
Krishna	3.7	78.3	72.1	Vizianagaram	12.1	86.2	76.6
Kurnool	17.1	68.0	64.7	Warangal	10.8	46.6	25.9
Mahabubnagar	9.9	43.8	30.8	WestGodavari	5.0	53.9	34.6
Medak	3.7	24.6	23.1	Andhra Pradesh State	7.4	59.7	47.6



**Learning**

	% Children who CANNOT read ...		% Children who CANNOT solve numerical written sums of ...	
	Level 1*	Level 2**	Subtraction or Division	Division
Age : 7-14 ALL	35.9	51.7	21.9	53.0
Age : 7-10 ALL	50.9	65.9	31.0	66.2
Age : 11-14 ALL	14.6	31.3	9.1	34.3
Govt : Std II-V	39.5	56.2	23.7	63.4
Pvt : Std II-V	28.2	37.9	8.9	44.3
Govt : Std VI-VIII	0.6	15.5	0.6	18.2
Pvt : Std VI-VIII	0.0	7.4	0.0	7.0

\* Level - 1: Ability to read a small paragraph with short sentences of std 1 level difficulty.

\*\*Level - 2: Ability to read a 'story' text with some long sentences of std 2 level difficulty.

Subtraction:  
2 digit subtraction with borrowing.

Division:  
3 digit divided by 1 digit.

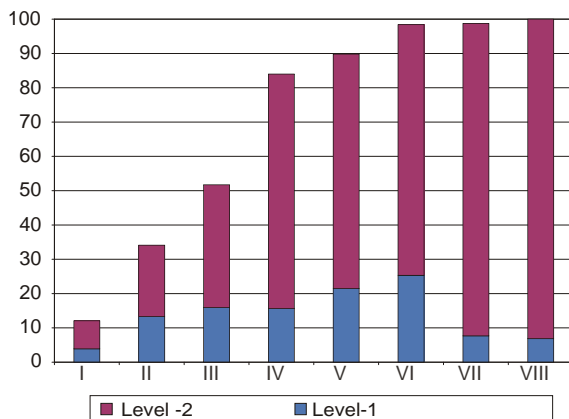
**Learning curves**

Children who CAN read and solve numerical written sums

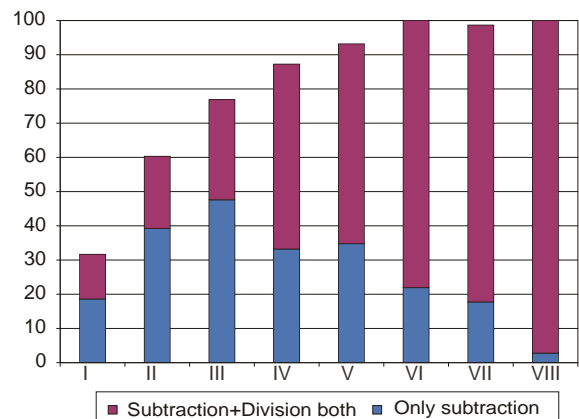
Reading

Arithmetic

% All school children who can read-standardwise



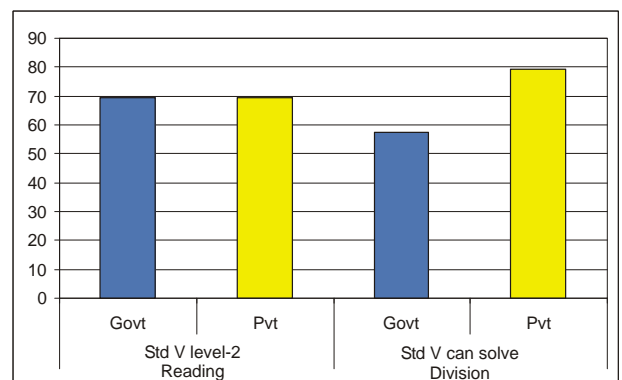
% All school children who can solve written numerical sums - standardwise



**Performance of surveyed districts**

District	All Children	Std V children	
	% Out-of-school	% CAN read level - 2	% CAN solve division and subtraction
Papum Pare	9.1	81.9	65.8
East Siang	2.3	37.5	45.5
West Kameng	2.3	67.5	55.0
Arunachal Pradesh State	5.0	68.3	58.4

Comparison of government and private schools based on % Std. V children who CAN read level-2 and solve written numerical sums



## Learning

	% Children who CANNOT read ...		% Children who CANNOT solve numerical written sums of ...	
	Level 1*	Level 2**	Subtraction or Division	Division
Age : 7-14 ALL	38.0	61.8	44.0	74.0
Age : 7-10 ALL	49.0	75.6	54.7	83.9
Age : 11-14 ALL	17.0	35.6	23.9	55.3
Govt : Std II-V	44.5	73.7	49.8	82.3
Pvt : Std II-V	37.5	60.0	39.2	68.9
Govt : Std VI-VIII	6.6	23.1	13.8	39.3
Pvt : Std VI-VIII	11.8	20.3	8.2	31.6

\* Level - 1: Ability to read a small paragraph with short sentences of std 1 level difficulty.

\*\*Level - 2: Ability to read a 'story' text with some long sentences of std 2 level difficulty.

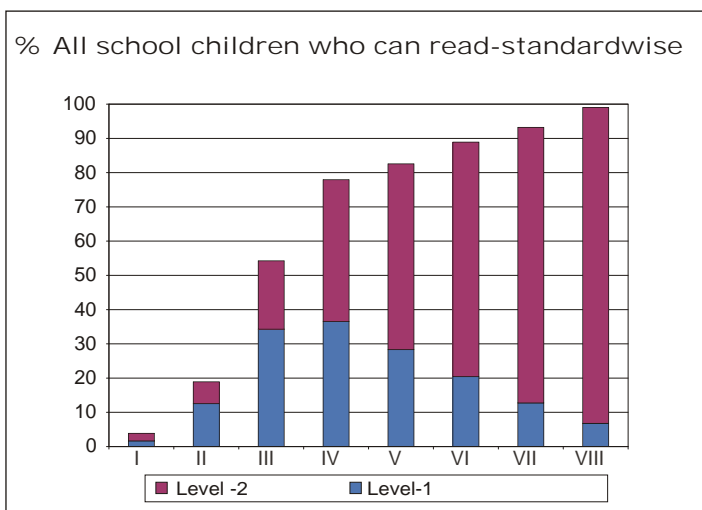
Subtraction:  
2 digit subtraction with borrowing.

Division:  
3 digit divided by 1 digit.

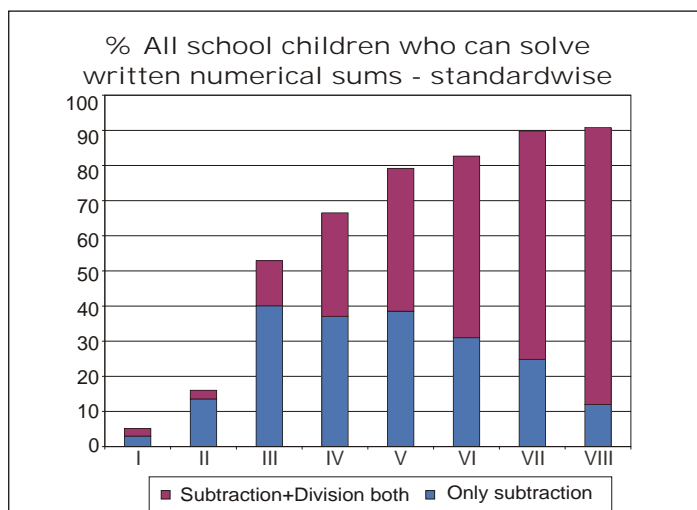
## Learning curves

Children who CAN read and solve numerical written sums

Reading



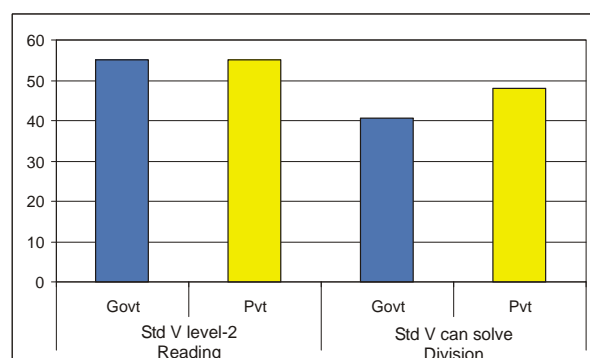
Arithmetic



## Performance of surveyed districts

District	All Children	Std V children	
	% Out-of-school	% CAN read level - 2	% CAN solve division and subtraction
Barpeta	1.8	46.8	42.6
Dhemaji	5.0	50.0	33.3
Dhubri	8.8	42.7	20.6
Dibrugarh	5.2	88.9	64.7
Golaghat	5.7	60.0	28.6
Nagaon	8.1	54.9	42.0
Sonitpur	8.9	25.0	0.0
Tinsukia	16.3	71.7	71.7
Assam State	7.5	54.3	40.7

Comparison of government and private schools based on % Std. V children who CAN read level-2 and solve written numerical sums



## Performance of all districts

District	All Children	Std V children		District	All Children	Std V children	
	% Out-of-school	% CAN read level - 2	% CAN solve division and subtraction		% Out-of-school	% CAN read level - 2	% CAN solve division and subtraction
Araria	23.0	73.5	58.8	Madhubani	12.8	56.6	59.0
Aurangabad	9.3	88.2	78.4	Munger	18.6	68.2	64.7
Banka	10.4	73.5	57.1	Muzaffarpur	5.8	72.5	66.4
Begusarai	4.3	78.9	74.3	Nalanda	11.9	52.2	42.9
Bhagalpur	5.4	75.0	64.8	Nawada	18.5	81.1	75.3
Bhojpur	3.3	44.2	40.8	PashchimChampar	17.3	72.3	55.4
Buxar	5.1	68.2	64.2	PurbaChamparan	12.3	84.0	63.0
Darbhanga	22.8	84.4	49.2	Purnia	15.9	71.0	64.5
Gaya	11.7	69.2	53.2	Rohtas	4.2	54.4	47.8
Gopalganj	4.5	60.3	48.2	Saharsa	26.1	56.3	54.7
Jamui	22.4	72.2	60.3	Samastipur	9.6	76.5	70.6
Jehanabad	9.1	82.2	83.8	Saran	9.4	70.2	66.4
Katihar	18.9	75.0	70.3	Sheikhpura	12.0	79.2	77.9
Khagaria	12.0	71.0	76.3	Sheohar	25.1	61.5	51.3
Kishanganj	23.3	63.6	59.7	Sitamarhi	25.2	70.0	56.7
Lakhisarai	16.7	86.8	81.9	Supaul	28.6	77.0	68.9
Madhepura	11.5	92.4	84.8	Vaishali	4.6	63.2	41.1
				Bihar State	13.5	71.3	61.4

Reading Test:  
Sample 3

कहानी

एक दिन बकरी, चील और मेंढक ने आकाश में उड़ने की सोची। चील एक बड़ा सा गुब्बारा ले आई। बकरी एक डोरी और मेंढक एक टोकरी ले आया। तीनों ने मिलकर उसकी उड़न टोकरी बनाई। तीनों उसमें बैठकर उड़ने लगे। अचानक बकरी के सींग से गुब्बारा फट गया। सभी जमीन पर आ गिरे।

अनुच्छेद

बाजार में सुनार की दुकान है। सुनार जेवर बनाता है। जेवर चाँदी और सभी जेवर पहनते हैं।

आज जा... साथ में ए... वह छड़ी क... जादू क...



कहानी

एक दिन कनक को खेलते-खेलते छोटी सी गिलहरी मिली। कनक उसे अपने घर ले आया। कनक परेशान था कि इतनी छोटी गिलहरी को क्या खिलाया जाए? तभी उसे दूध की बोतल दिखाई दी। उसने बोतल में दूध भरकर गिलहरी को पिलाया। अब छोटी गिलहरी दूध पीकर खुशी से कुट-कुट करती है।

Reading Test:  
Sample 4

ASER 2005

अनुच्छेद

हम सभी मसूरी घूमने गए। वहाँ हमने पानी का झरना देखा। झरना बहुत ऊँचा था। वहाँ हम सबने फोटो भी खींची।

अनुच्छेद

रामलीला के दिन आए हैं। राम-रावण की लड़ाई होगी। बुराई की हार और भलाई की जीत होगी।

Performance of all districts

District	All Children	Std V children		District	All Children	Std V children	
	% Out-of-school	% CAN read level - 2	% CAN solve division and subtraction		% Out-of-school	% CAN read level - 2	% CAN solve division and subtraction
Bastar	0.3	100.0	100.0	Kawardha	9.1	56.6	29.0
Bilaspur	2.3	95.5	83.5	Korba	5.7	80.6	31.6
Dantewada	5.7	90.4	79.8	Mahasamun	0.6	55.3	84.6
Dhamtari	1.8	70.8	83.1	Raigarh	2.3	79.4	58.9
Durg	5.0	100.0	100.0	Raipur	12.0	80.6	55.6
Janjgir-C	1.1	23.8	10.9	Raj Nandgaon	1.9	51.9	43.6
Jashpur	6.7	60.5	20.0	Surguja	5.4	79.4	43.4
Kanker	1.3	85.9	61.9	Chattisgarh State	4.7	74.7	58.0

**भाषा**  
(वाचन के लिए)

**असर 2005**  
ASER

(४) कहानी

किसी जंगल में एक भालू रहता था। एक दिन की बात है। भालू बहुत भूखा था। वह खाने की खोज में घूम रहा था। घूमते-घूमते भालू शहर जा पहुँचा। उसे देखकर कुत्ते भौंकने लगे। उन्होंने भालू का पीछा किया। भालू डर गया। वह तेजी से जंगल की तरफ भागा।

अनुच्छेद

भारत मेरा देश है।  
मेरे देश में बहुत लोग हैं।  
मैं देश की सेवा करता हूँ।  
सब मुझसे खुश हैं।

अनुच्छेद

मेरे पास एक गेंद है।  
मेरी गेंद गोल है।  
वह बहुत बड़ी है।  
उस

**भाषा**  
(वाचन के लिए)

**असर 2005**  
ASER

(३) कहानी

मैं नानाजी के घर आया हूँ। मेरे नाना-नानी गाँव में रहते हैं। मुझे उनका गाँव बहुत अच्छा लगता है। यहाँ चारों ओर हरे-भरे खेत हैं। खेतों में कहीं गेहूँ के पौधे लगे हैं। तो कहीं सरसों के। देखकर मन खुश हो जाता है।

अनुच्छेद

मैं छोटा लड़का हूँ।  
मेरा भाई भी छोटा है।  
मेरी माँ मोटी है।  
पर बाबा बड़े हैं।

अनुच्छेद

राम के पास पैसे हैं।  
वह पैसे लेकर बाज़ार गया।  
बाज़ार से खाना लाया।  
घर आकर सो गया।

**Learning**

	% Children who CANNOT read ...		% Children who CANNOT solve numerical written sums of ...	
	Level 1*	Level 2**	Subtraction or Division	Division
Age : 7-14 ALL	41.2	64.5	50.3	75.4
Age : 7-10 ALL	67.5	88.1	76.0	95.2
Age : 11-14 ALL	6.4	33.3	16.4	49.1
Govt : Std II-V	60.6	86.7	71.8	94.3
Pvt : Std II-V	50.0	50.0	30.0	60.0
Govt : Std VI-VIII	1.6	23.4	10.1	43.2
Pvt : Std VI-VIII	66.7	66.7	0.0	33.3

\* Level - 1: Ability to read a small paragraph with short sentences of std 1 level difficulty.

\*\*Level - 2: Ability to read a 'story' text with some long sentences of std 2 level difficulty.

Subtraction:  
2 digit subtraction with borrowing.

Division:  
3 digit divided by 1 digit.

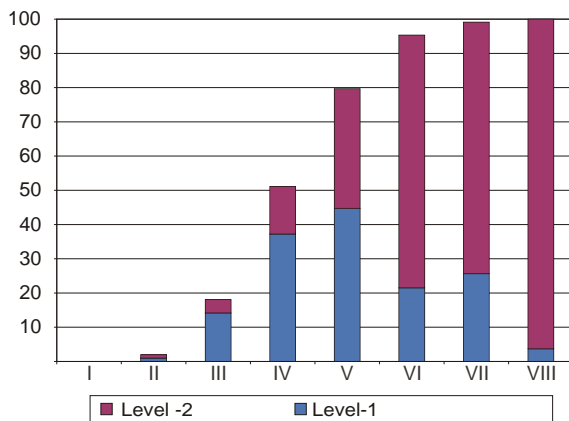
**Learning curves**

Children who CAN read and solve numerical written sums

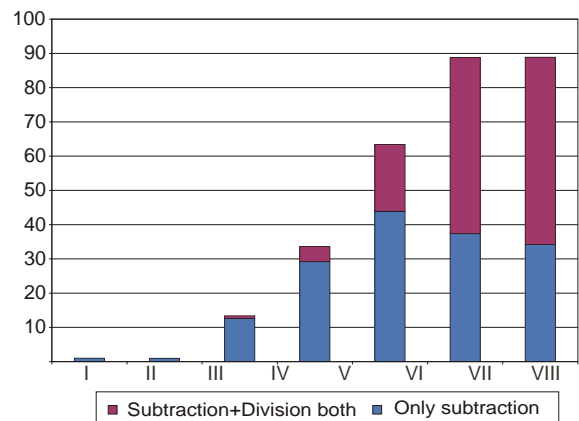
Reading

Arithmetic

% All school children who can read-standardwise



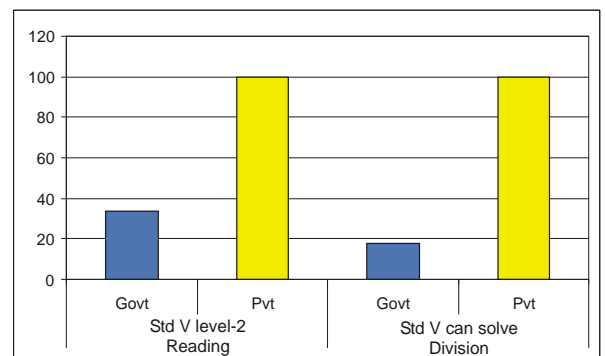
% All school children who can solve written numerical sums - standardwise



**Performance**

	All Children	Std V children	
	% Out-of-school	% CAN read level - 2	% CAN solve division and subtraction
Dadra & Nagar	0.6	35.0	19.5

Comparison of government and private schools based on % Std. V children who CAN read level-2 and solve written numerical sums



## Learning

	% Children who CANNOT read ...		% Children who CANNOT solve numerical written sums of ...	
	Level 1*	Level 2**	Subtraction or Division	Division
Age : 7-14 ALL	36.3	63.7	34.9	66.3
Age : 7-10 ALL	51.9	82.0	47.0	84.6
Age : 11-14 ALL	14.1	37.4	17.8	40.4
Govt : Std II-V	49.3	80.3	47.0	84.4
Pvt : Std II-V	55.2	87.2	41.1	79.4
Govt : Std VI-VIII	9.8	33.2	17.6	38.8
Pvt : Std VI-VIII	16.7	53.4	15.8	45.8

\* Level - 1: Ability to read a small paragraph with short sentences of std 1 level difficulty.

\*\*Level - 2: Ability to read a 'story' text with some long sentences of std 2 level difficulty.

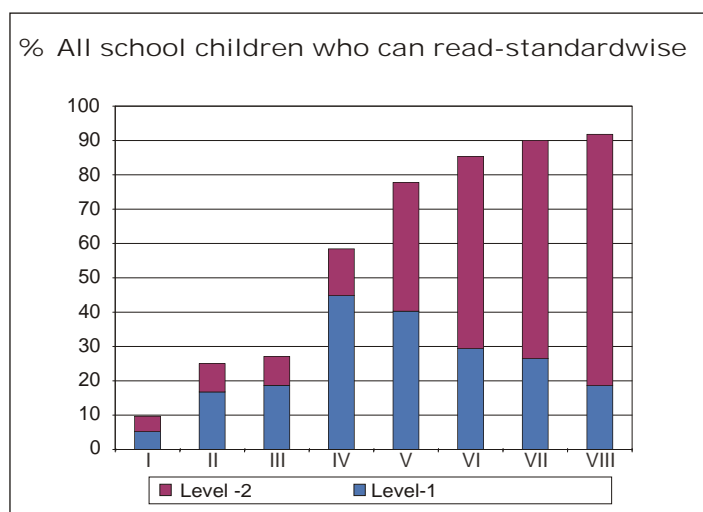
Subtraction:  
2 digit subtraction with borrowing.

Division:  
3 digit divided by 1 digit.

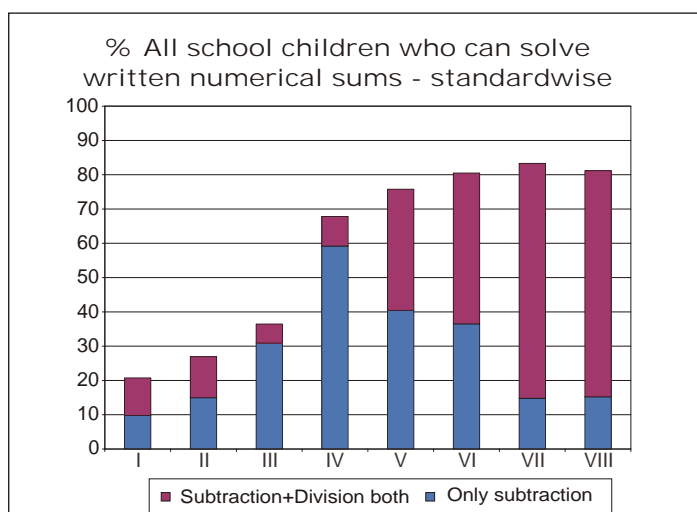
## Learning curves

Children who CAN read and solve numerical written sums

Reading



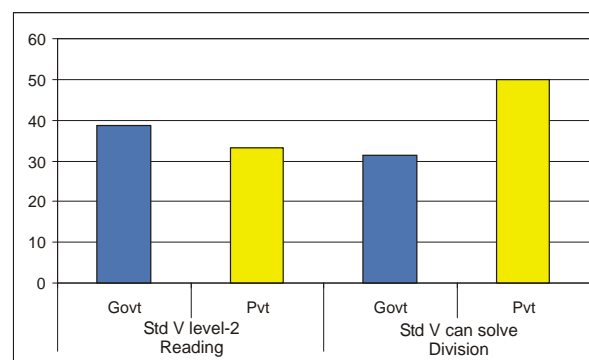
Arithmetic



## Performance

	All Children	Std V children	
	% Out-of-school	% CAN read level - 2	% CAN solve division and subtraction
Diu	4.38	49.0	12.6
Daman	0.72	34.1	41.9

Comparison of government and private schools based on % Std. V children who CAN read level-2 and solve written numerical sums



## Learning

	% Children who CANNOT read ...		% Children who CANNOT solve numerical written sums of ...	
	Level 1*	Level 2**	Subtraction or Division	Division
Age : 7-14 ALL	14.9	40.4	26.3	60.3
Age : 7-10 ALL	24.4	58.6	45.4	84.7
Age : 11-14 ALL	4.3	20.3	5.0	33.1
Govt : Std II-V	23.0	56.5	39.3	81.9
Pvt : Std II-V	16.7	52.4	40.5	76.8
Govt : Std VI-VIII	3.2	20.0	4.6	32.6
Pvt : Std VI-VIII	1.1	8.1	4.0	23.8

\* Level - 1: Ability to read a small paragraph with short sentences of std 1 level difficulty.

\*\*Level - 2: Ability to read a 'story' text with some long sentences of std 2 level difficulty.

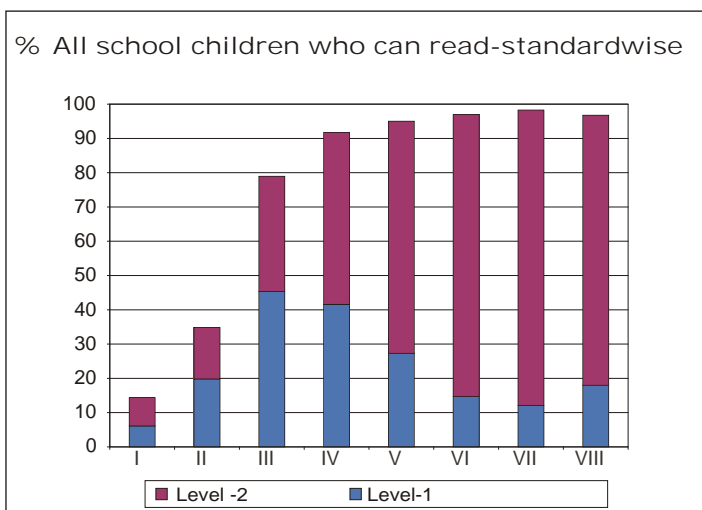
Subtraction:  
2 digit subtraction with borrowing.

Division:  
3 digit divided by 1 digit.

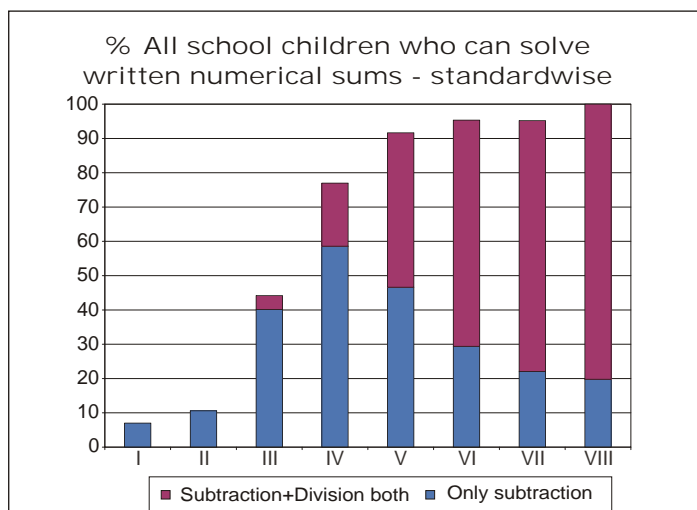
## Learning curves

Children who CAN read and solve numerical written sums

Reading



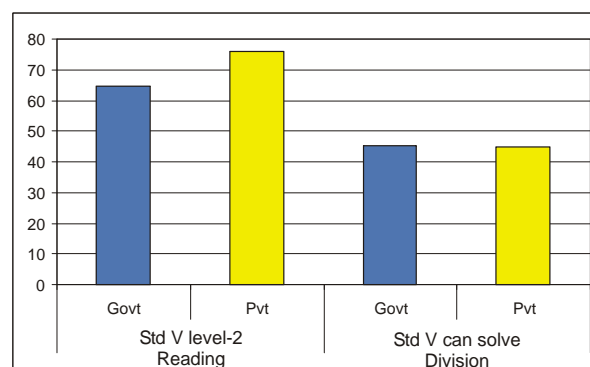
Arithmetic



## Performance of surveyed districts

District	All Children	Std V children	
	% Out-of-school	% CAN read level - 2	% CAN solve division and subtraction
SouthGoa	0.9	63.2	50.0
NorthGoa	0.0	69.5	43.2
Goa State	0.3	67.7	45.0

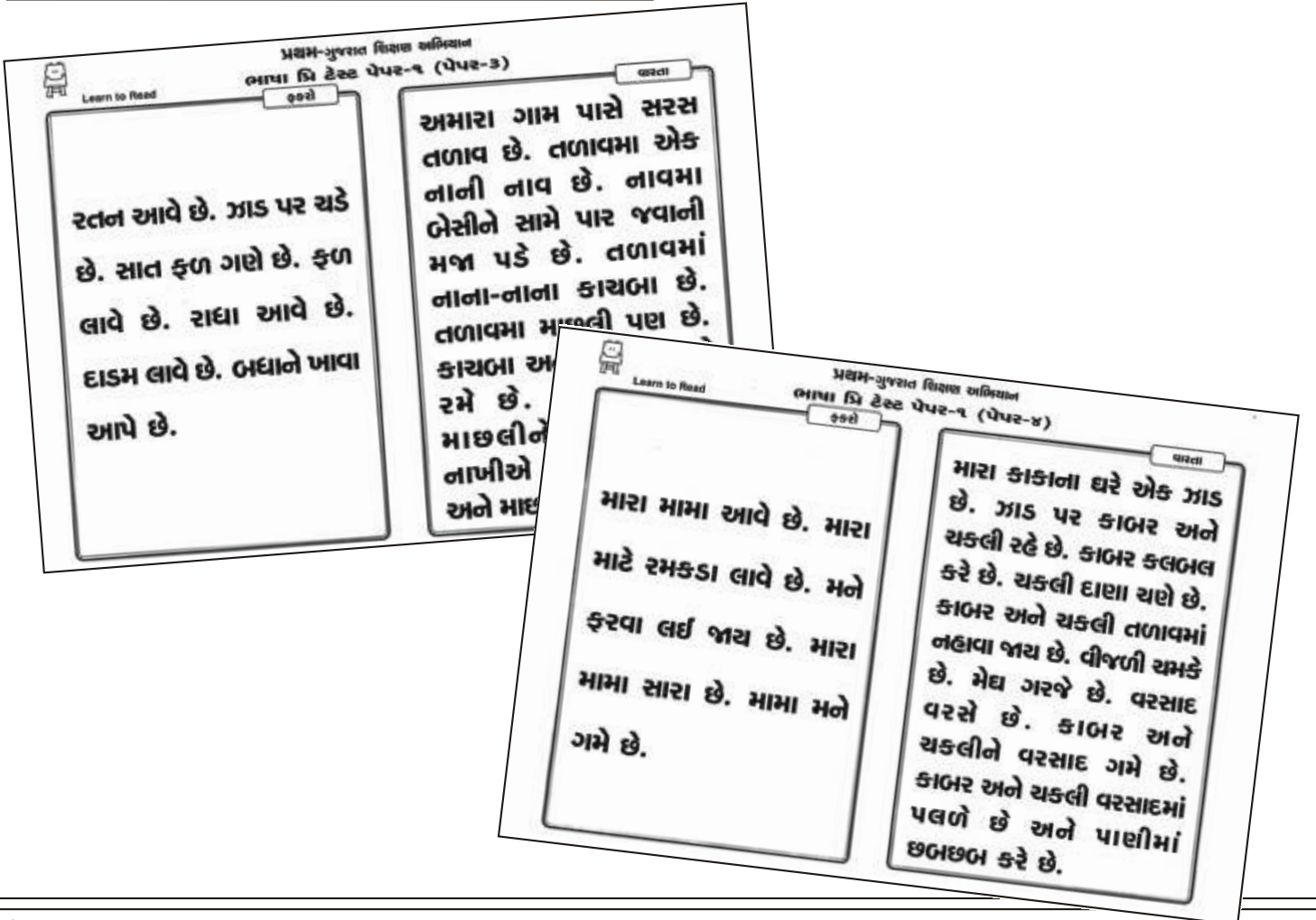
Comparison of government and private schools based on % Std. V children who CAN read level-2 and solve written numerical sums





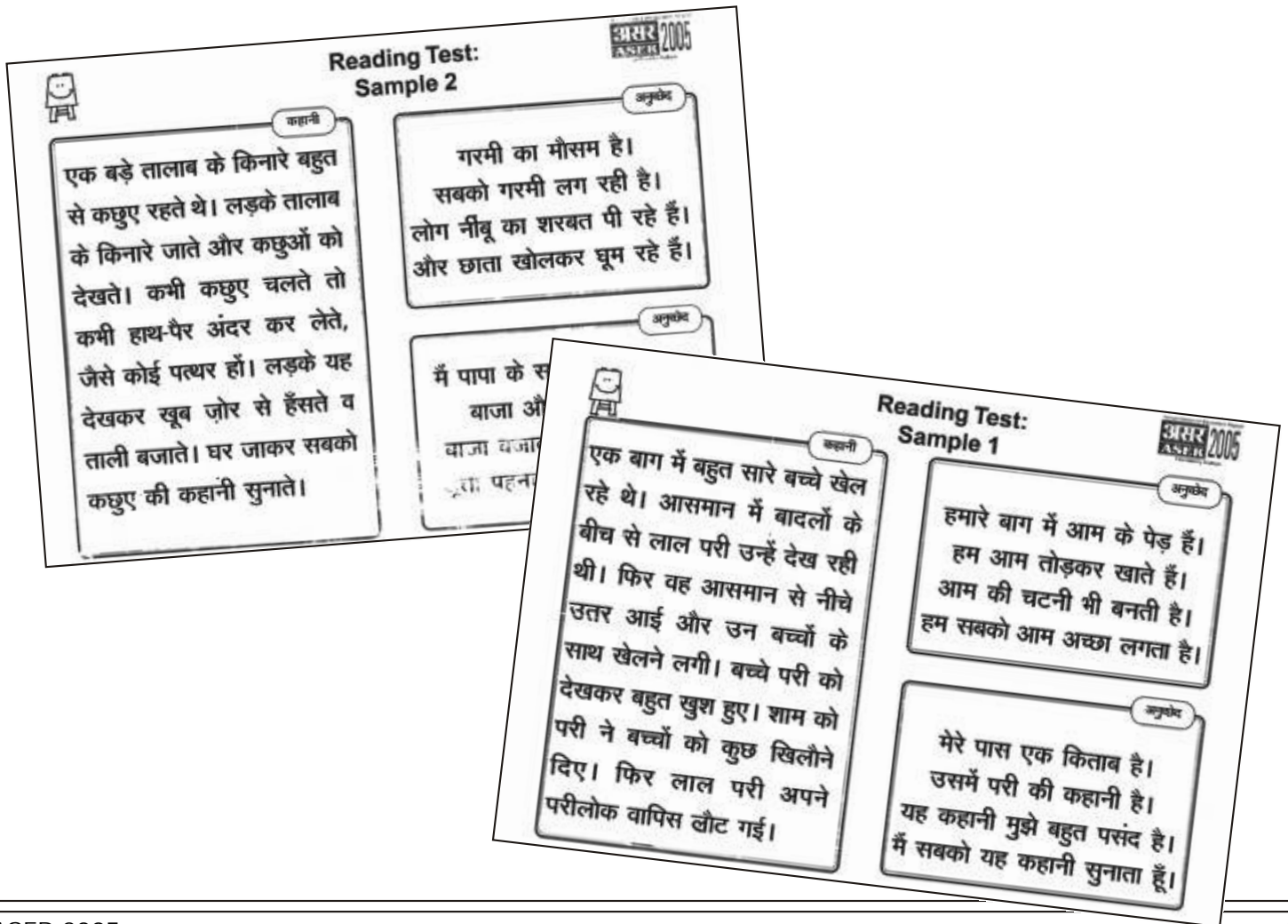
Performance of all districts

District	All Children	Std V children		District	All Children	Std V children	
	% Out-of-school	% CAN read level - 2	% CAN solve division and subtraction		% Out-of-school	% CAN read level - 2	% CAN solve division and subtraction
Ahmadabad	7.1	50.0	11.3	Narmada	1.1	44.4	45.9
Amreli	2.2	50.0	17.9	Navsari	0.9	60.6	69.7
Anand	1.4	81.0	32.8	Panch Mahals	2.9	53.7	38.9
Banas Kantha	3.2	74.1	50.0	Patan	1.2	20.9	91.3
Bharuch	4.3	70.3	48.0	Porbandar	2.0	10.8	8.8
Bhavnagar	5.2	84.9	43.1	Rajkot	2.2	51.3	29.2
Dohad	0.2	58.1	32.3	Sabar Kantha	2.6	42.4	33.3
Gandhinagar	2.5	69.0	59.7	Surat	1.9	17.4	79.7
Jamnagar	4.9	51.1	27.7	Surendranagar	5.1	65.5	51.9
Junagadh	0.0	31.9	21.6	Tha Dangs	11.0	28.6	82.0
Kachchh	9.8	47.0	37.8	Vadodara	5.6	37.5	29.3
Kheda	2.2	52.7	18.2	Valsad	8.4	66.7	52.6
Mahesana	3.5	49.2	60.3	Gujarat State	3.6	50.4	42.3



Performance of all districts

District	All Children	Std V children		District	All Children	Std V children	
	% Out-of-school	% CAN read level - 2	% CAN solve division and subtraction		% Out-of-school	% CAN read level - 2	% CAN solve division and subtraction
Ambala	1.9	58.2	59.5	Kurukshetra	2.7	69.0	54.4
Bhiwani	2.9	55.2	43.7	Mahendra garh	3.6	77.3	57.3
Faridabad	8.7	66.3	52.2	Panchkula	2.7	61.5	49.4
Fatehabad	8.4	88.1	72.6	Panipat	3.8	58.0	52.9
Gurgaon	9.5	61.5	53.3	Rewari	0.8	94.0	94.8
Hisar	9.7	76.9	80.6	Rohtak	3.5	86.6	84.2
Jhajjar	2.6	74.7	65.1	Sirsa	6.8	76.1	76.1
Jind	3.7	81.9	69.5	Sonipat	5.0	66.0	73.7
Kaithal	6.8	67.7	71.9	Yamuna nagar	2.1	57.3	45.8
Karnal	5.5	52.1	31.9	Haryana State	5.3	70.2	63.5



**Learning**

	% Children who CANNOT read ...		% Children who CANNOT solve numerical written sums of ...	
	Level 1*	Level 2**	Subtraction or Division	Division
Age : 7-14 ALL	19.8	35.6	22.0	44.9
Age : 7-10 ALL	33.8	58.7	36.8	70.0
Age : 11-14 ALL	1.4	5.4	2.6	12.1
Govt : Std II-V	28.4	52.4	30.4	63.2
Pvt : Std II-V	19.6	42.6	30.0	66.6
Govt : Std VI-VIII	0.0	1.4	1.3	7.0
Pvt : Std VI-VIII	0.0	0.0	0.0	5.7

\* Level - 1: Ability to read a small paragraph with short sentences of std 1 level difficulty.

\*\*Level - 2: Ability to read a 'story' text with some long sentences of std 2 level difficulty.

Subtraction:  
2 digit subtraction with borrowing.

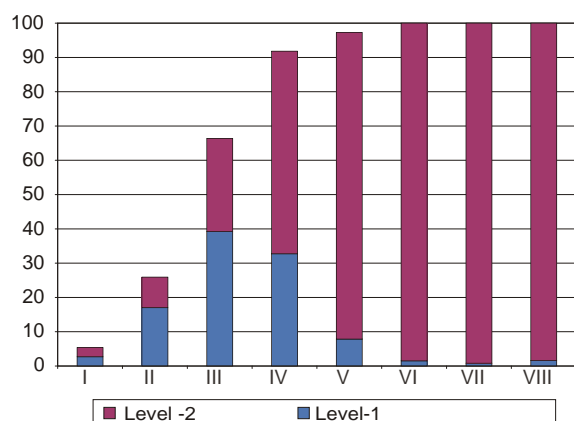
Division:  
3 digit divided by 1 digit.

**Learning curves**

Children who CAN read and solve numerical written sums

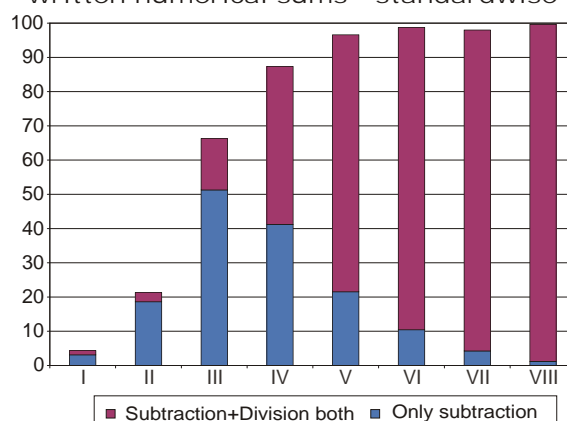
Reading

% All school children who can read-standardwise



Arithmetic

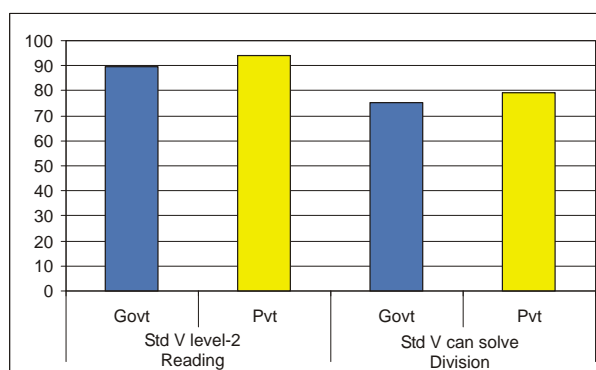
% All school children who can solve written numerical sums - standardwise



**Performance of surveyed districts**

District	All Children	Std V children	
	% Out-of-school	% CAN read level - 2	% CAN solve division and subtraction
Chamba	2.0	93.3	86.2
Mandi	0.6	91.0	75.6
Sirmaur	1.4	92.5	91.6
Solan	2.0	93.4	57.9
Una	0.0	75.9	63.9
Himachal Pradesh State	1.0	89.4	75.1

Comparison of government and private schools based on % Std. V children who CAN read level-2 and solve written numerical sums



**Learning**

	% Children who CANNOT read ...		% Children who CANNOT solve numerical written sums of ...	
	Level 1*	Level 2**	Subtraction or Division	Division
Age : 7-14 ALL	37.0	59.3	32.9	59.4
Age : 7-10 ALL	53.2	77.5	46.7	76.7
Age : 11-14 ALL	21.2	41.5	19.7	42.8
Govt : Std II-V	50.0	72.4	43.5	70.8
Pvt : Std II-V	31.4	59.1	19.9	63.0
Govt : Std VI-VIII	10.6	30.3	10.6	31.1
Pvt : Std VI-VIII	10.7	35.7	1.8	20.3

\* Level - 1: Ability to read a small paragraph with short sentences of std 1 level difficulty.

\*\*Level - 2: Ability to read a 'story' text with some long sentences of std 2 level difficulty.

Subtraction:  
2 digit subtraction with borrowing.

Division:  
3 digit divided by 1 digit.

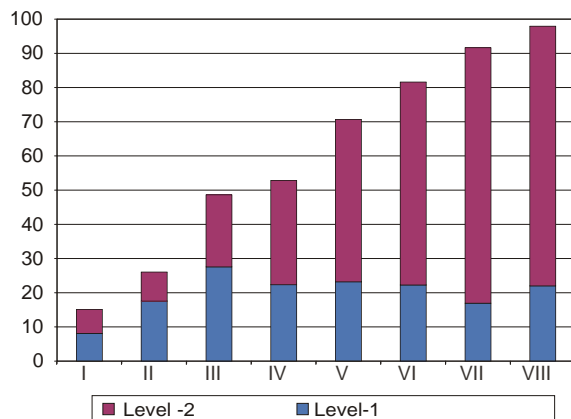
**Learning curves**

Children who CAN read and solve numerical written sums

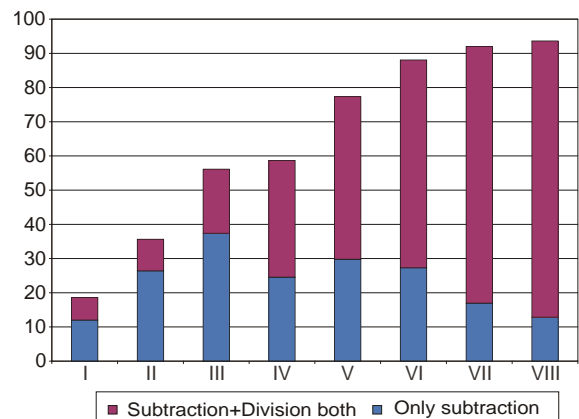
Reading

Arithmetic

% All school children who can read-standardwise



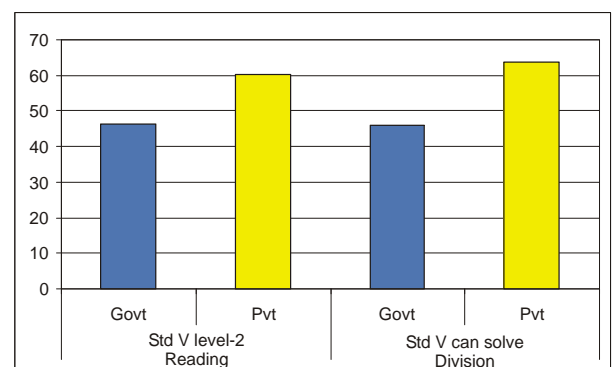
% All school children who can solve written numerical sums - standardwise



**Performance of surveyed districts**

District	All Children	Std V children	
	% Out-of-school	% CAN read level - 2	% CAN solve division and subtraction
Doda	0.9	65.2	81.2
Jammu	3.0	14.8	22.2
Kathua	1.4	45.5	38.2
Leh(Ladakh)	2.4	55.9	26.5
Punch	6.2	27.9	20.8
Rajauri	1.9	84.2	84.0
Udhampur	3.0	61.2	54.5
Kashmir State	2.7	47.5	47.5

Comparison of government and private schools based on % Std. V children who CAN read level-2 and solve written numerical sums



Performance of all districts

District	All Children	Std V children	
	% Out-of-school	% CAN read level - 2	% CAN solve division and subtraction
Pakaur	22.0	85.8	75.6
Gumla	20.1	64.0	46.1
Sahibganj	17.7	56.6	27.4
Jamtara	13.0	63.2	35.2
Ranchi	11.7	31.7	23.0
Godda	11.0	82.4	71.4
Garhwa	11.0	76.0	52.5
Lohardaga	10.9	63.1	46.2
Dumka	10.9	53.9	38.5
Giridih	10.1	71.1	54.0

District	All Children	Std V children	
	% Out-of-school	% CAN read level - 2	% CAN solve division and subtraction
Sindega	9.6	68.5	43.8
Saraikeela	8.7	76.7	50.7
Dhanbad	7.7	69.0	51.5
Deoghar	7.5	54.7	53.1
Chatra	6.6	51.3	44.7
Bokaro	6.2	65.0	48.3
Kodarma	5.5	65.9	24.7
Palamu	5.3	86.8	73.7
Hazaribagh	5.0	50.0	40.9
PurbiSinghb	4.2	62.3	30.4
Jharkhand State	9.8	65.5	46.2

The image shows three educational materials from the ASER 2005 survey:

- भाषा (वाचन के लिए) - Language (for reading):** A card with the title "भाषा (वाचन के लिए)" and "शब्द" (Words). It contains two columns of words:
  - Column 1: क, प, र, स, ट, द, ह, न, म, ब
  - Column 2: हल, सब, नरम, पीना, मैना, धोती, तकिया, निमटा, दूध
- अक्षर - Alphabet:** A card with the title "अक्षर" and "शब्द" (Words). It contains the same two columns of words as the first card.
- Reading Test: Sample 3:** A card with the title "Reading Test: Sample 3" and "अनुच्छेद" (Paragraph). It contains a story in Hindi:
 

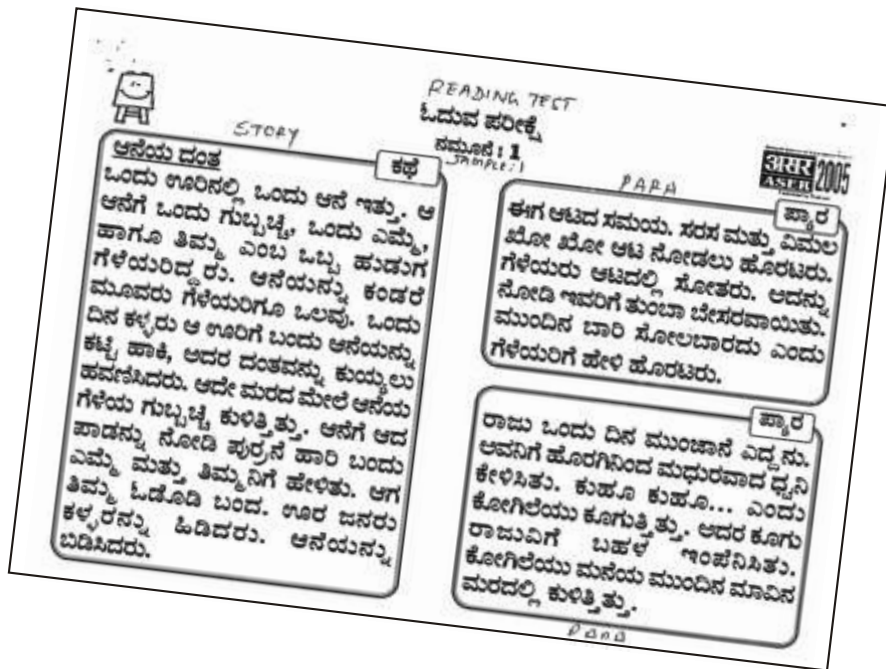
एक दिन बकरी, चील और मेंढक ने आकाश में उड़ने की सोची। चील एक बड़ा सा गुब्बारा ले आई। बकरी एक डोरी और मेंढक एक टोकरी ले आया। तीनों ने मिलकर उसकी उड़न टोकरी बनाई। तीनों उसमें बैठकर उड़ने लगे। अचानक बकरी के सींग से गुब्बारा फट गया। सभी जमीन पर आ गिरे।

बाजार में सुनार की दुकान है। सुनार जेवर बनाता है। जेवर चाँदी और सोने के होते हैं। सभी जेवर पहनना पसंद करते हैं।

आज जादूगर आया है। साथ में एक छड़ी लाया है। वह छड़ी को गोल-गोल घुमाकर, जादू का खेल दिखाएगा।

Performance of all districts

District	All Children	Std V children		District	All Children	Std V children	
	% Out-of-school	% CAN read level - 2	% CAN solve division and subtraction		% Out-of-school	% CAN read level - 2	% CAN solve division and subtraction
Bagalkot	0.5	55.6	16.7	Gulbarga	1.9	67.7	19.4
Bangalore	0.8	46.2	23.4	Hassan	1.4	73.7	34.2
Bangalore Ru	1.1	61.8	22.5	Haveri	1.0	24.6	17.5
Belgaum	1.6	24.5	3.9	Kodagu	2.0	71.6	26.5
Bellary	3.8	47.9	12.8	Kolar	2.3	27.6	21.8
Bidar	2.2	62.4	16.2	Koppal	2.1	72.7	15.4
Bijapur	2.4	45.8	17.7	Mandya	1.7	54.4	21.7
Chamarajana	2.5	38.7	14.8	Mysore	1.3	42.2	15.9
Chikmagalur	0.6	47.1	29.4	Raichur	7.6	45.4	27.8
Chitradurga	3.2	41.7	36.0	Shimoga	1.3	62.7	25.3
DakshinaKan	0.8	75.5	37.8	Tumkur	0.6	69.1	46.4
Davanagere	1.2	51.4	15.7	Udupi	0.2	91.3	60.9
Dharwad	2.8	24.4	8.7	UttaraKanna	0.5	36.6	50.9
Gadag	3.2	63.4	16.8	Karnataka State	1.9	50.6	23.8



Performance of all districts

District	All Children	Std V children		District	All Children	Std V children	
	% Out-of-school	% CAN read level - 2	% CAN solve division and subtraction		% Out-of-school	% CAN read level - 2	% CAN solve division and subtraction
Palakkad	4.6	95.7	81.7	Thiruvananthapuram	1.6	94.0	73.1
Idukki	3.6	71.2	57.6	Malappuram	0.8	53.5	28.2
Kozhikode	3.5	75.7	50.0	Kasaragod	0.6	93.3	53.3
Kannur	3.1	93.3	76.7	Thrissur	0.5	88.1	68.4
Wayanad	1.8	79.1	52.3	Kottayam	0.4	78.0	49.5
Alappuzha	1.8	93.2	70.5	Ernakulam	0.0	77.9	45.5
Pathanamthitta	1.6	86.6	74.6	Kollam	0.0	81.7	31.9
				Kerala State	1.6	81.4	55.7

**വായന സെറ്റ്**

**കഥ**

ഇന്ന് അവധിയാണ്. എല്ലാവരും വീട്ടിൽ ഉണ്ട് അച്ചനും കുട്ടികാരും ചായ കുടിക്കുന്നു. അനുജത്തി ഉറങ്ങുകയാണ്. അനുജൻ കുട്ടുകാരോടൊപ്പം കളിക്കുകയാണ്. അമ്മ അടുക്കളയിൽ പാചകം ചെയ്യുന്നു. ഉച്ചയ്ക്ക് നല്ല ഉലണ് കഴിക്കാം. വൈകുന്നേരം പുറത്തു പോകും. എനിക്ക് അവധി ദിവസം വളരെ ഇഷ്ടമാണ്

**ഖംഡിക**


എന്റെ അനുജത്തിക്ക് ഒരു പാവയുണ്ട്. എന്റെ അനുജനു ഒരു പുസ്തകം ഉണ്ട്. എനിക്ക് പഠിക്കാൻ ഇഷ്ടമാണ്. ഇന്ന് നല്ല രസം ഉണ്ട്

**ഖംഡിക**

എനിക്ക് ഒരു പക്ഷിയെ കാണാം. അത് ഒരു മരത്തിന്റെ മുകളിൽ ഇരിക്കുന്നു. പക്ഷിക്ക് നീല ചിറകുണ്ട്. അതിന് ചുവപ്പ് നിറത്തിലുള്ള തൂവൽ ഉണ്ട്.

Performance of all districts

District	All Children	Std V children		District	All Children	Std V children	
	% Out-of-school	% CAN read level - 2	% CAN solve division and subtraction		% Out-of-school	% CAN read level - 2	% CAN solve division and subtraction
Barwani	13.2	0.0	0.0	Morena	4.2	49.2	27.4
Bhind	1.4	42.6	30.5	Narsimhapur	4.8	58.1	60.7
Bhopal	4.9	33.1	13.7	Neemuch	7.0	84.4	70.1
Chhatarpur	2.0	42.3	34.6	Panna	8.9	38.6	20.5
Chhindwara	2.0	62.4	54.7	Raisen	1.6	72.1	43.8
Damoh	4.2	48.5	7.8	Rajgarh	3.6	27.4	9.5
Datia	3.2	42.6	44.4	Ratlam	4.0	95.3	93.2
Dewas	1.5	89.2	54.1	Rewa	1.6	36.8	20.2
Dhar	1.8	87.3	89.1	Sagar	2.6	29.9	19.4
Dindori	11.9	61.7	61.7	Satna	1.5	56.4	21.0
East Nimar	11.7	45.1	17.8	Sehore	2.7	97.5	87.5
Guna	7.8	29.7	14.1	Seoni	3.3	53.2	55.1
Gwalior	4.8	42.7	31.1	Shahdol	6.5	0.0	0.0
Harda	3.8	100.0	72.7	Shajapur	3.1	88.2	82.9
Hoshangabad	2.1	69.7	60.0	Sheopur	4.5	5.9	7.1
Indore	2.0	0.0	0.0	Shivpuri	4.9	37.6	27.1
Jabalpur	5.6	53.6	40.9	Tikamgarh	0.6	18.5	21.2
Jhabua	0.0	36.1	8.6	Ujjain	2.1	60.0	40.7
Katni	6.2	50.0	30.3	Umaria	0.0	85.7	14.3
Mandla	1.2	25.0	13.6	West Nimar	2.5	100.0	100.0
				Madhya Pradesh State	4.0	51.5	37.5



(२) कहानी

भाषा  
(वाचन के लिए)

सपना बारिश में भीगती हुई घर जा रही थी। तभी उसे उसकी सहेली मीनू दिखाई दी। मीनू ने कहा सपना बहुत बारिश हो रही है तुम छतरी के नीचे आ जाओ और मेरे घर चलो। जब बारिश रुक जाएगी तब तुम घर चली जाना। सपना मीनू के घर चली गई। वहाँ पर दोनों ने गरमा गरम चाय पी।

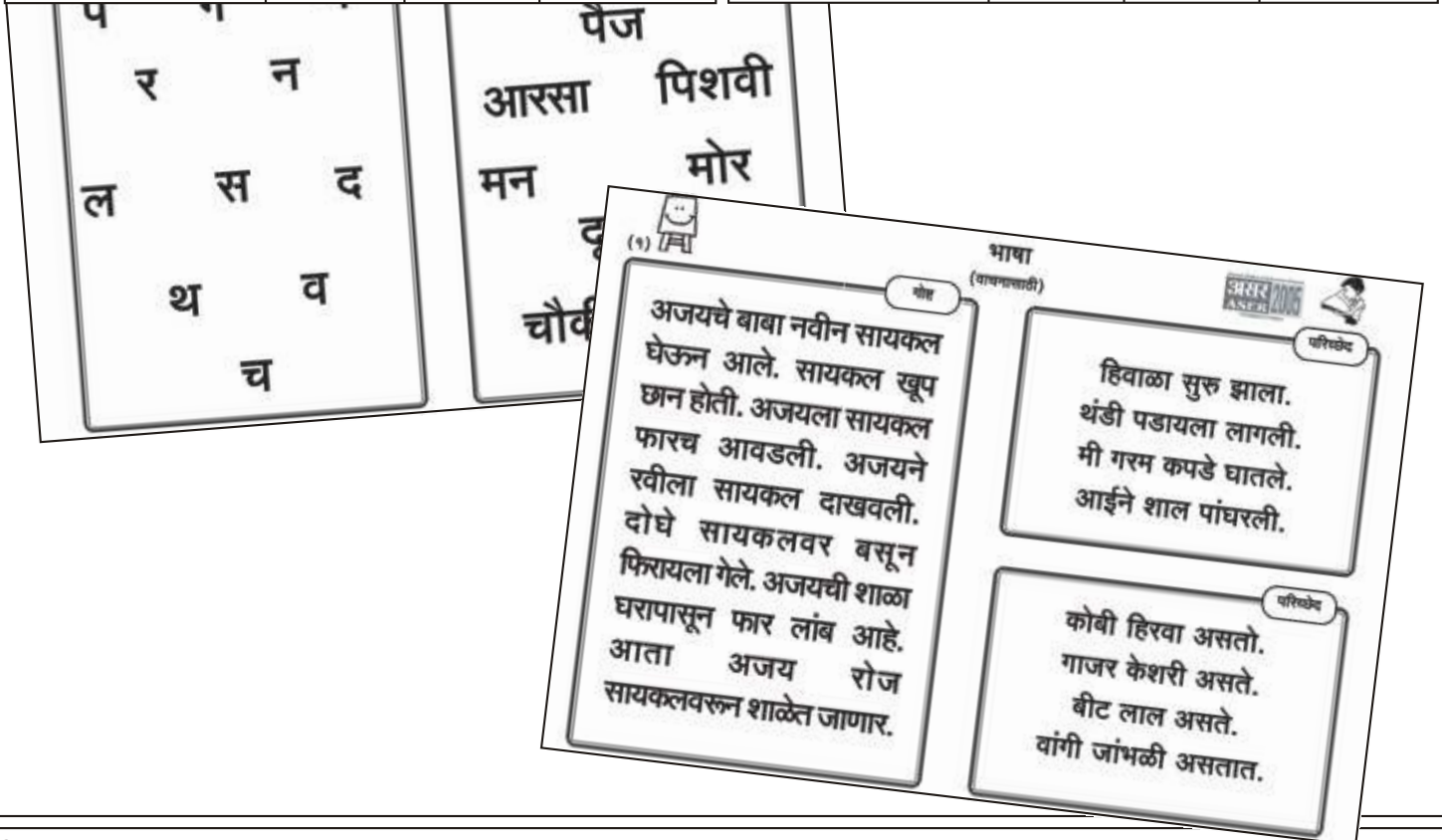
जंगल में जानवर रहते हैं। शेर जंगल का राजा होता है। जंगल में खेलकूद करते हैं। शेर के आते ही सब डर जाते हैं।

जयपुर एक बहुत बड़ा शहर है। वहाँ हवा महल मशहूर है। जयपुर से आगे अजमेर है। जहाँ पर लोग घूमने जाते हैं।



Performance of all districts

District	All Children	Std V children		District	All Children	Std V children	
	% Out-of-school	% CAN read level - 2	% CAN solve division and subtraction		% Out-of-school	% CAN read level - 2	% CAN solve division and subtraction
Ahmednagar	1.6	83.7	61.6	Nanded	2.8	60.4	31.3
Akola	0.3	55.6	21.9	Nandurbar	16.4	39.7	13.0
Amravati	1.4	51.4	10.8	Nashik	2.4	50.0	15.7
Aurangabad	5.7	44.4	15.3	Osmanabad	0.2	66.7	34.6
Bhandara	0.8	64.9	18.9	Parbhani	1.2	44.4	29.6
Beed	6.5	46.7	22.0	Pune	1.9	70.2	59.5
Buldhana	0.4	71.7	63.0	Raigarh	1.8	86.3	32.9
Chandrapur	1.0	83.3	20.8	Ratnagiri	1.3	78.0	72.0
Dhule	3.0	54.2	15.5	Sangli	0.7	86.8	71.7
Gadchiroli	6.2	65.3	20.4	Satara	1.7	84.3	61.0
Gondiya	0.2	56.6	23.7	Sindhudurg	0.3	75.5	63.4
Hingoli	4.7	65.9	30.8	Solapur	4.2	70.3	46.9
Jalgaon	2.6	42.9	30.4	Thane	7.2	57.1	23.2
Jalna	2.2	61.4	43.4	Wardha	0.7	72.9	39.0
Kolhapur	2.2	80.0	33.3	Washim	2.8	71.9	48.4
Latur	3.5	70.1	40.3	Yavatmal	4.1	55.4	35.1
Nagpur	2.0	50.8	18.2	Maharashtra State	2.8	66.1	38.7



## Learning

	% Children who CANNOT read ...		% Children who CANNOT solve numerical written sums of ...	
	Level 1*	Level 2**	Subtraction or Division	Division
Age : 7-14 ALL	42.3	57.1	39.9	65.9
Age : 7-10 ALL	53.4	69.4	52.2	80.6
Age : 11-14 ALL	29.3	42.8	25.7	48.9
Govt : Std II-V	48.4	62.7	40.5	71.7
Pvt : Std II-V	28.0	48.3	27.7	65.5
Govt : Std VI-VIII	13.9	23.4	15.6	37.3
Pvt : Std VI-VIII	4.7	10.9	6.0	18.1

\* Level - 1: Ability to read a small paragraph with short sentences of std 1 level difficulty.

\*\*Level - 2: Ability to read a 'story' text with some long sentences of std 2 level difficulty.

Subtraction:  
2 digit subtraction with borrowing.

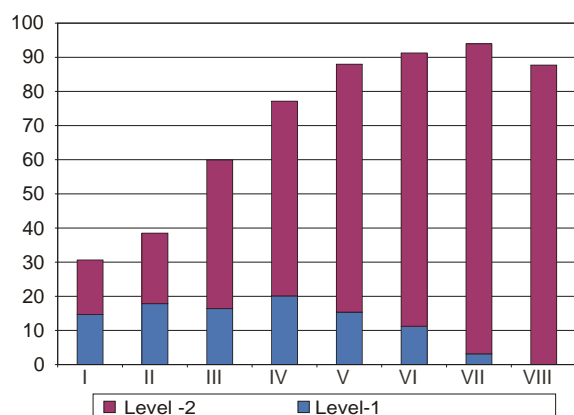
Division:  
3 digit divided by 1 digit.

## Learning curves

Children who CAN read and solve numerical written sums

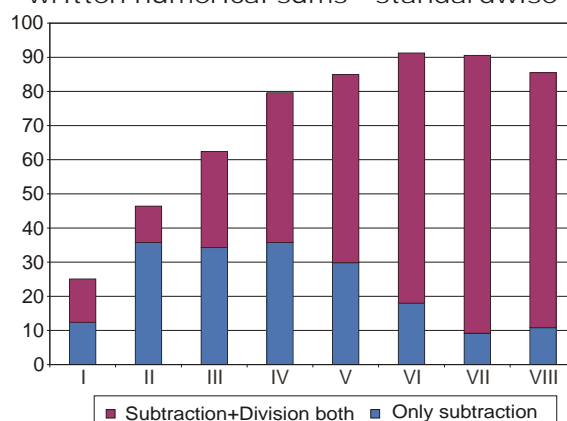
Reading

% All school children who can read-standardwise



Arithmetic

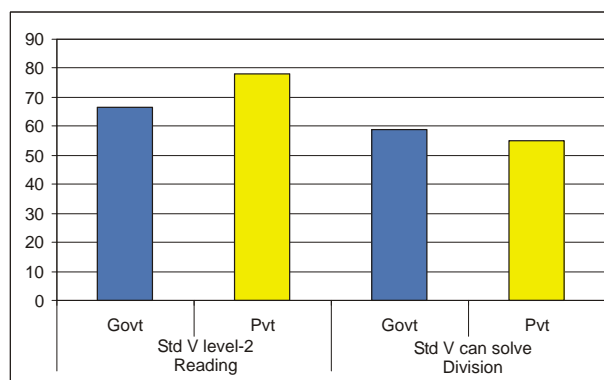
% All school children who can solve written numerical sums - standardwise



## Performance of surveyed districts

District	All Children	Std V children	
	% Out-of-school	% CAN read level - 2	% CAN solve division and subtraction
Ukhrul	24.0	31.3	37.5
Bishnupur	20.3	80.0	62.5
Churachandpur	1.3	92.5	61.4
Manipur State	13.7	72.6	55.1

Comparison of government and private schools based on % Std. V children who CAN read level-2 and solve written numerical sums



### Learning

	% Children who CANNOT read ...		% Children who CANNOT solve numerical written sums of ...	
	Level 1*	Level 2**	Subtraction or Division	Division
Age : 7-14 ALL	32.5	40.3	34.6	61.3
Age : 7-10 ALL	46.1	55.7	51.6	81.8
Age : 11-14 ALL	18.3	24.2	17.7	40.9
Govt : Std II-V	25.1	33.5	31.0	64.7
Pvt : Std II-V	17.3	27.0	22.5	58.3
Govt : Std VI-VIII	6.2	15.5	3.1	33.5
Pvt : Std VI-VIII	0.0	0.0	0.0	5.8

\* Level - 1: Ability to read a small paragraph with short sentences of std 1 level difficulty.

\*\*Level - 2: Ability to read a 'story' text with some long sentences of std 2 level difficulty.

Subtraction:  
2 digit subtraction with borrowing.

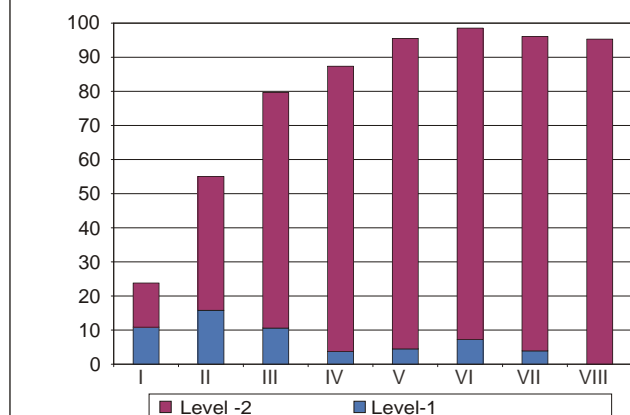
Division:  
3 digit divided by 1 digit.

### Learning curves

Children who CAN read and solve numerical written sums

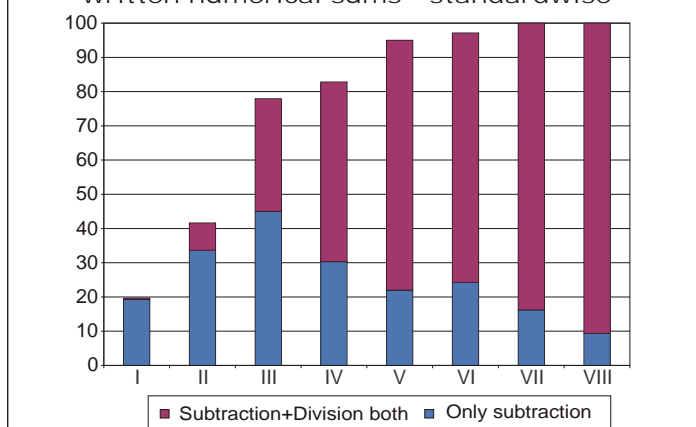
Reading

% All school children who can read-standardwise



Arithmetic

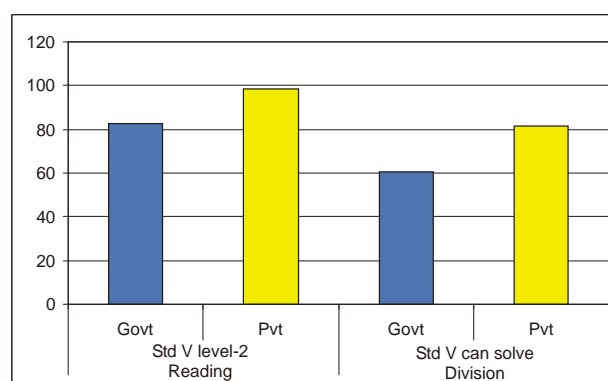
% All school children who can solve written numerical sums - standardwise



### Performance of surveyed districts

District	All Children	Std V children	
	% Out-of-school	% CAN read level - 2	% CAN solve division and subtraction
East Khasi Hill	12.6	86.1	55.8
West Garo Hill	3.5	96.6	92.9
Meghalaya State	8.1	91	73

Comparison of government and private schools based on % Std. V children who CAN read level-2 and solve written numerical sums



## Learning

	% Children who CANNOT read ...		% Children who CANNOT solve numerical written sums of ...	
	Level 1*	Level 2**	Subtraction or Division	Division
Age : 7-14 ALL	37.9	64.8	37.6	77.4
Age : 7-10 ALL	53.0	79.1	50.7	87.0
Age : 11-14 ALL	19.0	46.8	21.1	65.3
Govt : Std II-V	31.6	62.4	32.4	75.8
Pvt : Std II-V	12.0	48.5	21.6	61.8
Govt : Std VI-VIII	17.4	42.8	9.5	48.0
Pvt : Std VI-VIII	0.0	0.0	0.0	0.0

\* Level - 1: Ability to read a small paragraph with short sentences of std 1 level difficulty.

\*\*Level - 2: Ability to read a 'story' text with some long sentences of std 2 level difficulty.

Subtraction:  
2 digit subtraction with borrowing.

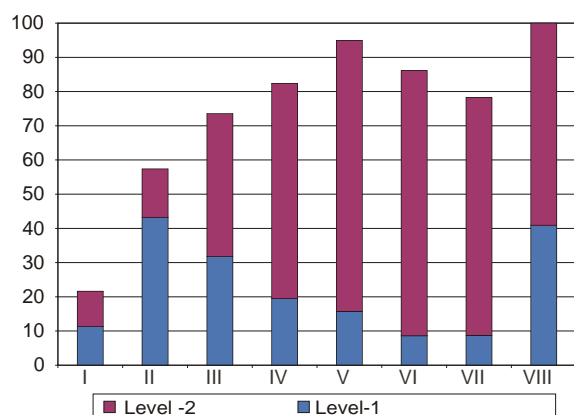
Division:  
3 digit divided by 1 digit.

## Learning curves

Children who CAN read and solve numerical written sums

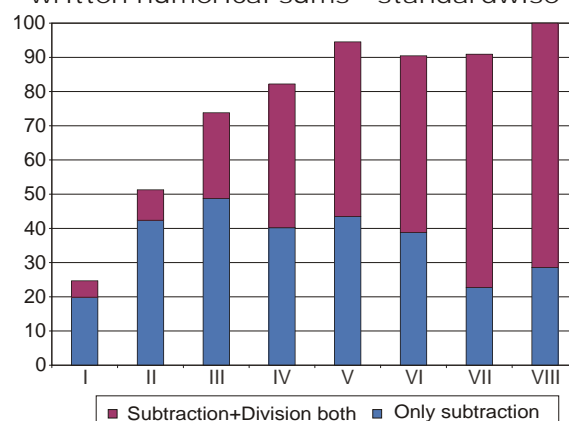
Reading

% All school children who can read-standardwise



Arithmetic

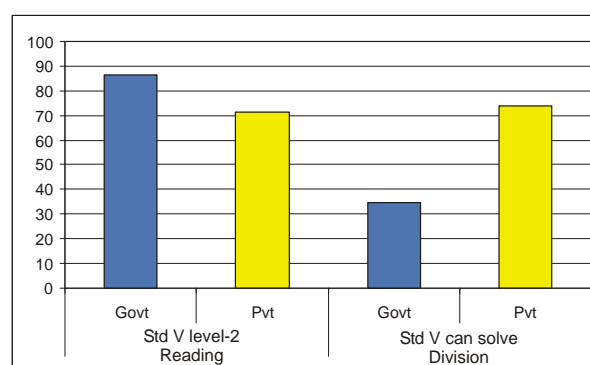
% All school children who can solve written numerical sums - standardwise



## Performance of surveyed districts

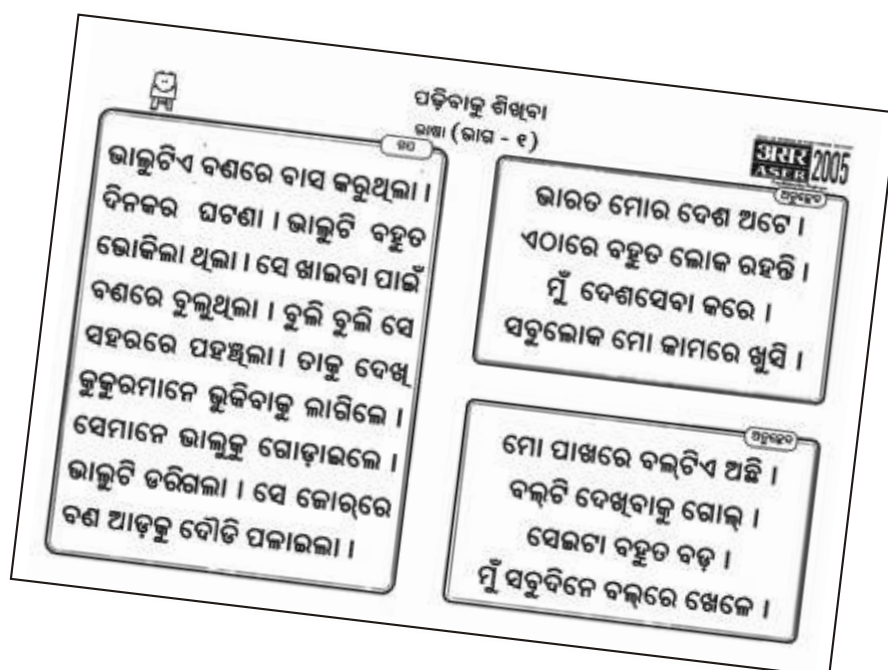
District	All Children	Std V children	
	% Out-of-school	% CAN read level - 2	% CAN solve division and subtraction
Dimapur*	21.8	85.7	42.9
mon	15.5	77.4	53.6
Nagaland State	18.9	79.2	51.1

Comparison of government and private schools based on % Std. V children who CAN read level-2 and solve written numerical sums



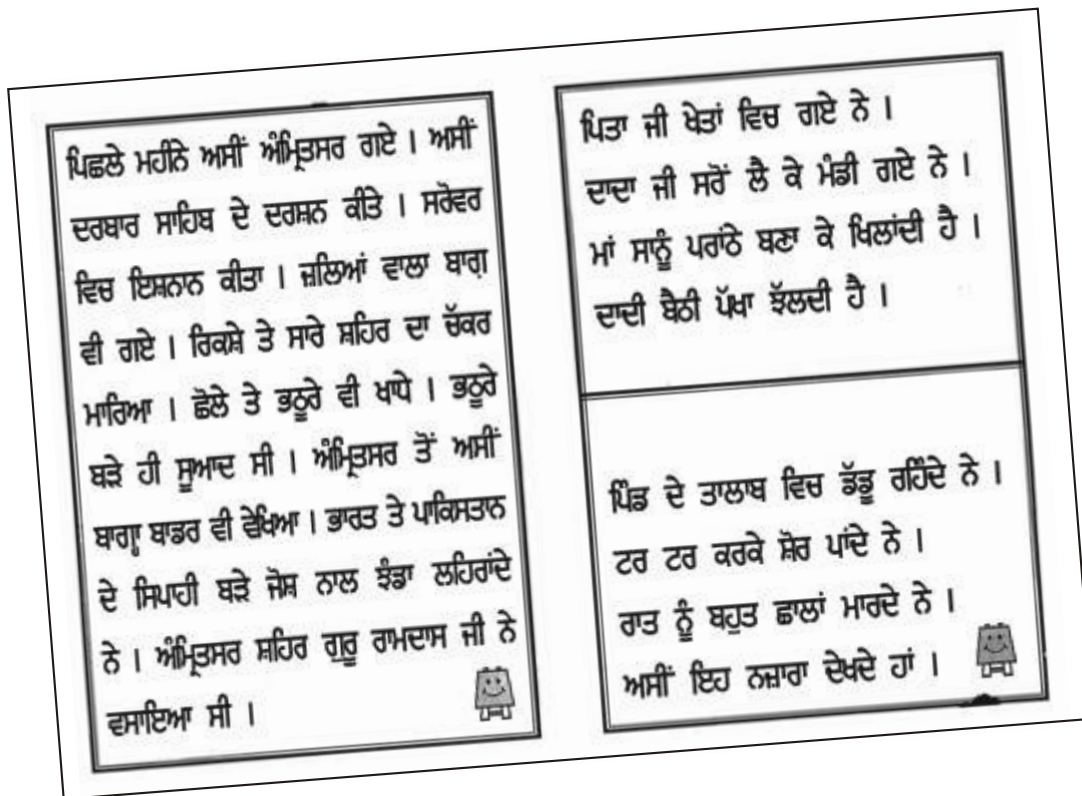
Performance of all districts

District	All Children	Std V children		District	All Children	Std V children	
	% Out-of-school	% CAN read level - 2	% CAN solve division and subtraction		% Out-of-school	% CAN read level - 2	% CAN solve division and subtraction
Anugul	2.0	37.1	37.1	Kandhamal	8.0	52.6	45.1
Balangir	4.7	49.0	9.4	Kendrapara	4.7	47.6	37.8
Baleshwar	17.3	53.0	52.0	Kendujhar	4.3	54.7	22.1
Bargarh	5.5	55.1	19.6	Khordha	1.7	78.2	55.8
Baudh	4.8	73.9	17.2	Koraput	17.8	48.6	25.4
Bhadrak	1.0	62.7	38.7	Malkangiri	32.6	67.2	36.4
Cuttack	6.8	57.9	28.4	Mayurbhanj	8.2	72.1	41.9
Debagarh	2.8	64.5	31.6	Nabarangapur	18.7	28.4	28.0
Dhenkanal	4.2	70.6	31.8	Nayagarh	3.7	64.0	31.0
Gajapati	20.6	58.5	32.9	Nuapada	11.4	46.6	10.2
Ganjam	8.3	62.0	26.2	Puri	1.3	77.1	39.8
Jagatsinghapur	3.8	72.0	42.9	Rayagada	30.8	34.8	6.3
Jajapur	1.4	62.4	35.5	Sambalpur	9.0	53.0	24.5
Jharsuguda	4.3	61.8	29.0	Sonapur	3.9	43.0	14.0
Kalahandi	15.0	48.7	19.6	Sundargarh	10.6	46.4	20.9
				Orissa State	8.9	56.5	30.4



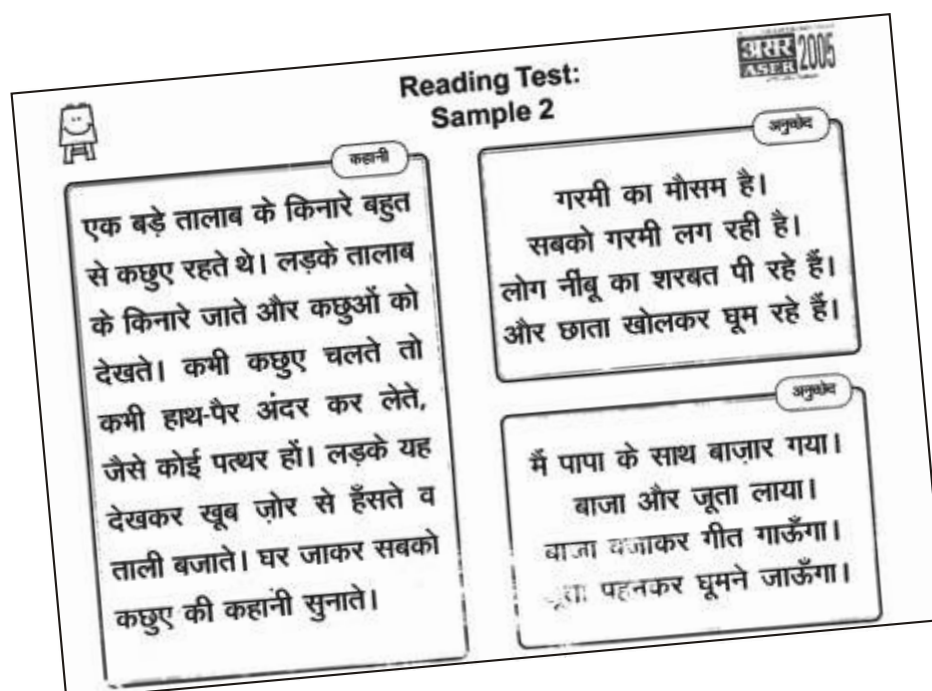
Performance of all districts

District	All Children	Std V children		District	All Children	Std V children	
	% Out-of-school	% CAN read level - 2	% CAN solve division and subtraction		% Out-of-school	% CAN read level - 2	% CAN solve division and subtraction
Amritsar	3.0	69.2	58.2	Ludhiana	1.7	50.0	31.8
Bathinda	9.0	34.2	26.8	Mansa	7.4	72.2	58.4
Faridkot	6.2	71.4	44.3	Moga	9.7	46.5	33.3
Fatehgarh Sahib	0.8	61.2	53.5	Muktsar	17.6	54.9	26.4
Firozpur	9.1	84.0	60.2	Nawanshahr	3.3	63.6	49.2
Gurdaspur	2.7	51.8	40.0	Patiala	2.2	59.2	42.9
Hoshiarpur	1.6	62.7	61.1	Rupnagar	0.9	44.3	45.5
Jalandhar	2.7	62.8	31.5	Sangrur	2.2	52.9	44.1
Kapurthala	3.1	63.3	52.5	Punjab State	4.3	60.0	46.4



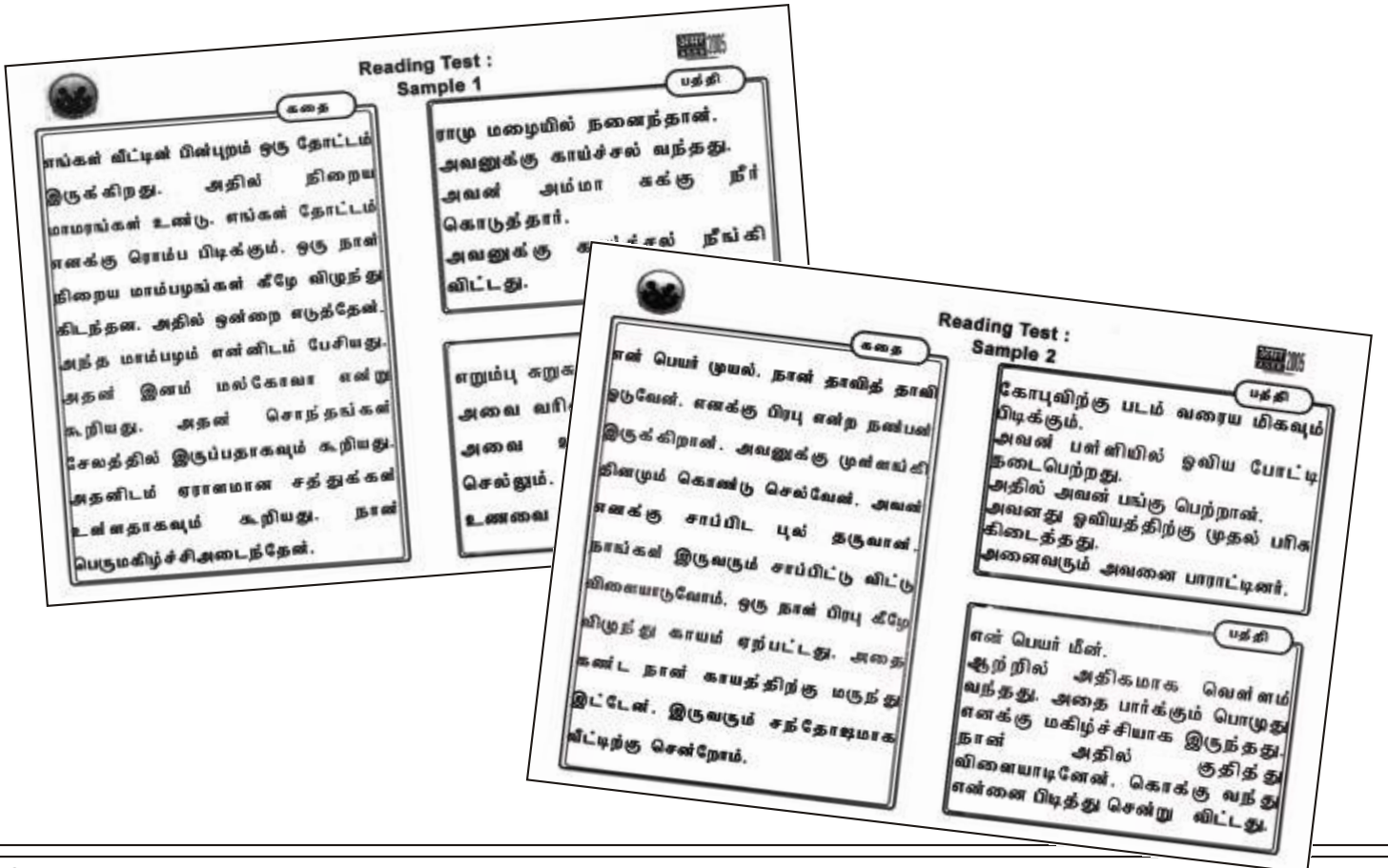
Performance of all districts

District	All Children	Std V children		District	All Children	Std V children	
	% Out-of-school	% CAN read level - 2	% CAN solve division and subtraction		% Out-of-school	% CAN read level - 2	% CAN solve division and subtraction
Ajmer	14.7	41.8	22.0	Jaipur	6.6	45.4	38.9
Alwar	9.2	51.8	39.5	Jaisalmer	15.5	54.8	53.9
Banswara	18.0	47.5	17.7	Jalor	15.1	73.3	72.8
Baran	11.4	63.3	45.0	Jhalawar	18.6	42.9	40.5
Barmer	13.6	79.8	60.9	Jhunjhunun	1.6	69.1	59.1
Bharatpur	12.3	53.0	36.0	Jodhpur	10.8	50.8	34.9
Bhilwara	15.3	51.4	39.2	Karauli	6.4	52.5	52.5
Bikaner	18.9	70.3	47.0	Kota	6.9	59.3	46.2
Bundi	12.7	66.7	51.7	Nagaur	8.5	50.4	27.2
Chittaurgar	7.8	60.9	29.7	Pali	4.5	58.0	45.7
Churu	4.6	80.2	78.3	Rajsamand	7.4	59.9	28.9
Dausa	9.7	66.1	51.2	Sawai Madhopur	15.2	55.6	41.0
Dhaulpur	14.0	54.4	41.6	Sikar	6.7	78.8	65.7
Dungarpur	8.2	38.7	21.9	Sirohi	14.5	22.2	22.5
Ganganagar	7.6	72.1	46.7	Tonk	9.6	62.9	59.4
Hanuman garh	3.5	70.2	75.4	Udaipur	13.6	57.4	27.9
				Rajasthan State	10.4	59.1	45.6



## Performance of all districts

District	All Children	Std V children		District	All Children	Std V children	
	% Out-of-school	% CAN read level - 2	% CAN solve division and subtraction		% Out-of-school	% CAN read level - 2	% CAN solve division and subtraction
Ariyalur	2.7	61.5	34.6	Salem	3.2	33.3	40.7
Coimbatore	1.0	48.3	24.7	Sivaganga	0.3	36.2	36.3
Cuddalore	4.6	56.2	26.0	Thanjavur	1.7	65.5	37.9
Dharmapuri	3.0	48.4	16.1	Theni	1.5	24.6	24.6
Dindigul	0.8	82.9	68.4	Nilgiris	1.7	85.2	57.7
Erode	3.3	0.0	0.0	Thiruvallur	1.9	35.2	19.0
Kancheepuram	1.0	38.2	36.5	Thiruvallur	1.1	36.5	31.1
Kanyakumari	1.1	74.3	35.2	Thoothukkudi	2.8	56.8	43.2
Karur	8.5	40.6	32.3	Tiruchirappalli	2.1	41.5	25.6
Madurai	2.2	67.3	37.5	Tirunelveli	0.6	67.6	40.5
Nagapattinam	2.7	44.2	31.2	Tiruvannamalai	1.6	28.1	27.6
Perambalur	1.5	34.4	19.7	Vellore	4.0	57.1	25.3
Pudukkottai	7.1	56.7	49.2	Viluppuram	4.0	36.7	13.5
Ramanathapuram	2.2	42.9	21.4	Virudunagar	7.5	36.1	40.9
				Tamil Nadu State	2.7	49.99	31.49





## Learning

	% Children who CANNOT read ...		% Children who CANNOT solve numerical written sums of ...	
	Level 1*	Level 2**	Subtraction or Division	Division
Age : 7-14 ALL	18.4	34.4	22.1	59.1
Age : 7-10 ALL	29.2	47.4	31.8	78.3
Age : 11-14 ALL	8.0	22.0	13.0	41.0
Govt : Std II-V	18.9	38.6	22.3	66.2
Pvt : Std II-V	0.0	0.0	0.0	0.0
Govt : Std VI-VIII	1.0	10.3	4.2	27.4
Pvt : Std VI-VIII				

\* Level - 1: Ability to read a small paragraph with short sentences of std 1 level difficulty.

\*\*Level - 2: Ability to read a 'story' text with some long sentences of std 2 level difficulty.

Subtraction:  
2 digit subtraction with borrowing.

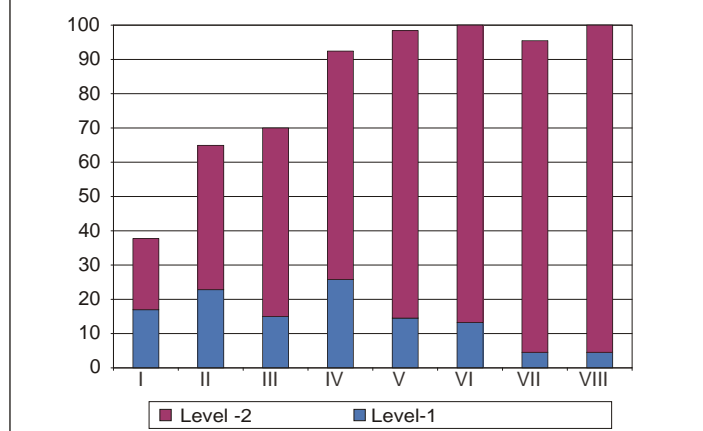
Division:  
3 digit divided by 1 digit.

## Learning curves

Children who CAN read and solve numerical written sums

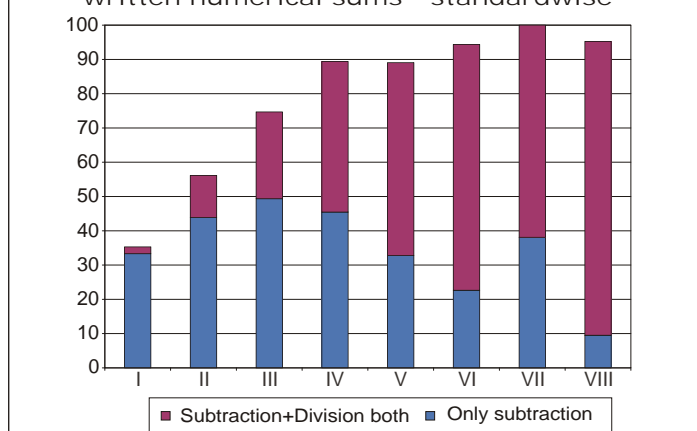
Reading

% All school children who can read-standardwise



Arithmetic

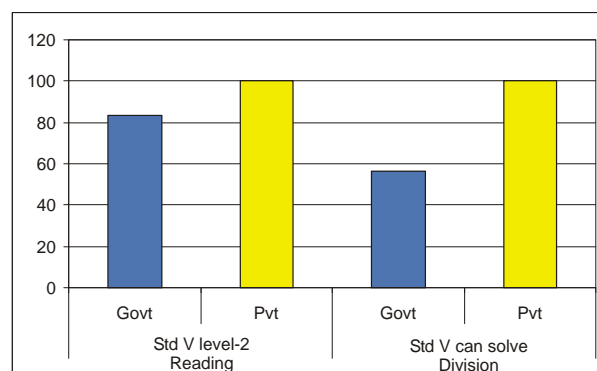
% All school children who can solve written numerical sums - standardwise



## Performance of surveyed districts

District	All Children	Std V children	
	% Out-of-school	% CAN read level - 2	% CAN solve division and subtraction
SouthTripura	1.8	84	56.3
Tripura State	1.8	84	56.3

Comparison of government and private schools based on % Std. V children who CAN read level-2 and solve written numerical sums



Performance of all districts

District	All Children	Std V children		District	All Children	Std V children	
	% Out-of-school	% CAN read level - 2	% CAN solve division and subtraction		% Out-of-school	% CAN read level - 2	% CAN solve division and subtraction
Agra	8.8	50.0	30.7	Jaunpur	1.7	33.0	9.9
Aligarh	8.0	45.2	40.5	Jhansi	4.7	78.4	41.6
Allahabad	8.0	46.2	21.0	Jyotiba Phule Nagar	9.0	58.1	35.5
Ambedkar Nagar	2.5	61.8	29.4	Kannauj	3.4	38.2	20.0
Auraiya	3.0	39.5	18.7	Kanpur Dehat	1.6	45.9	22.9
Azamgarh	4.9	53.0	39.0	Kaushambi	9.2	47.8	30.0
Baghpat	1.0	67.5	56.8	Kheri	9.5	27.3	6.5
Bahraich	15.5	46.8	29.1	Kushinagar	5.6	43.0	11.9
Ballia	3.4	55.2	45.7	Lalitpur	6.9	49.0	29.7
Balrampur	10.5	48.6	25.5	Lucknow	8.4	36.4	15.5
Banda	1.4	73.3	59.6	Mahoba	3.5	24.0	15.8
Barabanki	8.3	31.8	18.9	Mahrajganj	9.4	54.0	29.2
Bareilly	11.5	45.0	19.3	Mainpuri	0.8	79.0	76.4
Basti	7.4	57.7	20.0	Mathura	9.6	44.4	31.9
Bijnor	12.6	51.8	44.7	Mau	3.8	56.3	28.8
Budaun	20.9	46.8	22.3	Meerut	3.6	58.7	33.0
Bulandshahar	0.5	62.6	42.3	Mirzapur	4.6	43.2	28.1
Chandauli	3.7	88.9	71.1	Moradabad	24.3	57.9	52.6
Chitrakoot	1.1	95.6	94.2	Muzaffarnagar	10.5	59.6	44.2
Deoria	4.3	51.2	27.6	Pilibhit	9.9	46.5	27.0
Etah	7.1	21.1	10.2	Pratapgarh	1.6	56.6	37.4
Etawah	4.4	37.9	28.9	RaeBareli	7.4	54.3	22.9
Faizabad	2.3	63.6	43.6	Rampur	18.7	46.3	28.8
Farrukhabad	6.4	19.5	15.8	Saharanpur	11.2	68.6	46.5
Fatehpur	8.3	50.0	36.8	Sant Ravidas Nagar	1.6	51.9	46.2
Firozabad	21.7	57.0	71.0	Sant Kabir Nagar	3.3	42.0	31.4
Gautam Buddha Nagar	3.8	62.9	50.8	Shahjahanpur	21.6	31.7	11.1
Ghaziabad	3.4	85.0	82.0	Shravasti	6.3	23.4	13.8
Ghazipur	1.7	50.9	42.6	Siddharth Nagar	3.4	57.5	17.8
Gonda	3.5	54.7	30.2	Sitapur	9.6	31.5	13.7
Gorakhpur	7.2	34.4	15.4	Sonbhadra	11.5	46.2	27.5
Hamirpur	1.7	42.2	27.1	Sultanpur	4.8	52.2	21.7
Hardoi	5.5	41.1	15.7	Unnao	7.9	44.2	29.5
Hathras	4.3	55.5	64.8	Varanasi	1.8	82.4	72.7
Jalaun	3.6	16.2	16.9	Uttar Pradesh State	7.3	49.5	31.9

Performance of all districts

District	All Children	Std V children		District	All Children	Std V children	
	% Out-of-school	% CAN read level - 2	% CAN solve division and subtraction		% Out-of-school	% CAN read level - 2	% CAN solve division and subtraction
Almora	2.2	69.2	58.4	Nainital	4.6	91.0	83.5
Bageshwar	1.7	70.6	58.8	Rudrapray	0.6	66.0	51.1
Chamoli	0.5	79.2	57.8	TehriGarh	0.0	81.4	41.4
Champawat	2.8	56.1	47.4	Udham Sing Nagar	5.6	50.7	38.5
Dehradun	0.3	99.2	79.0	Uttarkashi	1.4	79.0	51.0
Hardwar	0.6	97.9	71.0	Uttaranchal State	2.0	78.6	59.5

**भाषा (वाचन के लिए)**

अक्षर

प ग म  
र न  
ल स द  
थ व  
च

**शब्द**

भारती साथ  
पैन  
पारस गिलास  
बच चोर  
धूप  
चालू

**भाषा (वाचन के लिए)**

कहानी

धीरज कल अपने गाँव गया, क्योंकि माँ बहुत बीमार थी। धीरज ने माँ की हालत देखी और तुरंत माँ को साथ लेकर वापस शहर आ गया। धीरज ने शहर में अपनी माँ का इलाज कराया। अब उसकी माँ ठीक हो गई है।

**अनुच्छेद**

राधा हमारे गाँव में रहती है। राधा किताब पढ़ती है। उसको पढ़ना आता है। उसकी दीदी को भी पढ़ना आता है।

**अनुच्छेद**

मीना नानी के घर जायेगी। मामाजी उसे लेकर जायेंगे। मामीजी भी साथ जायेंगे। सब लोग जलेबी खायेंगे।

## Performance of all districts

District	All Children	Std V children		District	All Children	Std V children	
	% Out-of-school	% CAN read level - 2	% CAN solve division and subtraction		% Out-of-school	% CAN read level - 2	% CAN solve division and subtraction
Bankura	3.8	76.0	58.0	Maldah	7.7	55.1	57.3
Bardhaman	1.5	88.5	76.9	Medinipur	2.6	85.4	88.8
Birbhum	0.0	84.0	48.0	Murshidabad	0.8	0.0	0.0
Dakshin Dinajpur	5.0	0.0	0.0	North 24 Parganaa	2.9	84.1	74.6
Haora	7.4	59.0	79.5	Puruliya	14.3	50.0	52.4
Hugli	4.2	63.9	57.6	South 24 Parganaa	2.7	65.9	69.8
Koch Bihar	11.0	86.5	74.7	Uttar Dinajpur	9.5	84.4	84.9
				West Bengal State	4.4	74.5	72.6

**পদ**

আমাদের বাড়ির পেছনে পুকুর। তাতে অনেক রকম মাছ। ছোট মাছ ধরতে বসেছেন মেজদা। আমার পিসতুত্রে দাদা। হাতে ছিল। এক মনে তাকিয়ে ফাতনার দিকে। মাছ টোপ গিলাবে, ফাতনাও ডুববে। আর মেজদা ও এক টানে মাছটি গাঁধে তুলবেন। আমি পাহারাদার। পাশে একটি ঝাঁপিতে ধরা মাছ রাখা হবে। অনেকক্ষণ ঠায় বসে আছি। আমি মেজদাকে দেখছি। মেজদা দেখছেন ফাতনা। মাছ আর ওঠেনা। কখন খুমিয়ে পড়েছি জানি না। খুম ভাঙলো বিছনায়। মেজদা পাঁজাকোলা করে আমাকে বাড়ি পৌঁছে দিয়ে গিয়েছেন।

**অনুচ্ছেদ**

মাছ-ভাত আমাদের প্রধান খাদ্য।  
আমাদের দেশে অনেক নদী।  
ছোট বড় কত জলাশয়।  
যেখানে জল সেখানেই মাছ।  
মাছের চাকও করা হয়।

**পঠন পরীক্ষা : নমুনা**

**পদ**

এখন পূজোর ছুটি। কাল বাবা মার সাথে চিড়িয়াখানা দেখলাম। সোনালী রোদ ছিল। হাঁটতে বেশ লাগল। বাঁচার ভেতরে বাঘ সিংহ। তবু তাদের দেখে ভয় হয়। বাঁদররা বাগান খেতে ভালবাসে। হাত বাড়িয়েই থাকে। নানা রংয়ের নানা দেশের পাখী অজস্র। শীতের দেশের ভালুক আঁড়াসেই রইল। রোদ সইতে মোটে পারে না।

**অনুচ্ছেদ**

বিক্রম শিং হরিণরা খুব লামল। রাজহাঁসরাও সারাক্ষণ সীতার কটিল। বেচর অতি বুড়ো কিশোর অছিন্ন রোদ পোয়ালো।

**অনুচ্ছেদ**

শরতের নীল আকাশ ভালবাসি।  
ভাল লাগে তার সোনালী রোদ।  
মাঝে মাঝে সাদা মেঘের খেলা।  
বিরবিধের বৃষ্টি কখনো।

**অনুচ্ছেদ**

বাঘ-সিংহের চার পা। মানুষের দুই পা।  
পাখীদেরও তাই। গাছের একটি-ই পা; ভাল  
গাছ একপাত্রে দাঁড়িয়ে থাকে। মাছ জলে থাকে;  
তাদের পা নেই।